



ANTIQUE AUTO PARTS, INC.

HOW TO ORDER AND DESIGN YOUR CUSTOM STAINLESS STEEL TANK

Custom tanks can be broken down into two types.

TYPE ONE would be to reproduce your original tank.

TYPE TWO would be a one of a kind, specially made for your car.

TYPE ONE

Call us and see if we might already have a sample tank for the car you want to do, if not, you can send your tank and a strap. We will fabricate a tank and new straps to fit in the stock location even if you might want to make changes in the - width - depth (for more capacity), - sending unit, or - Internal pump for T.P.I.

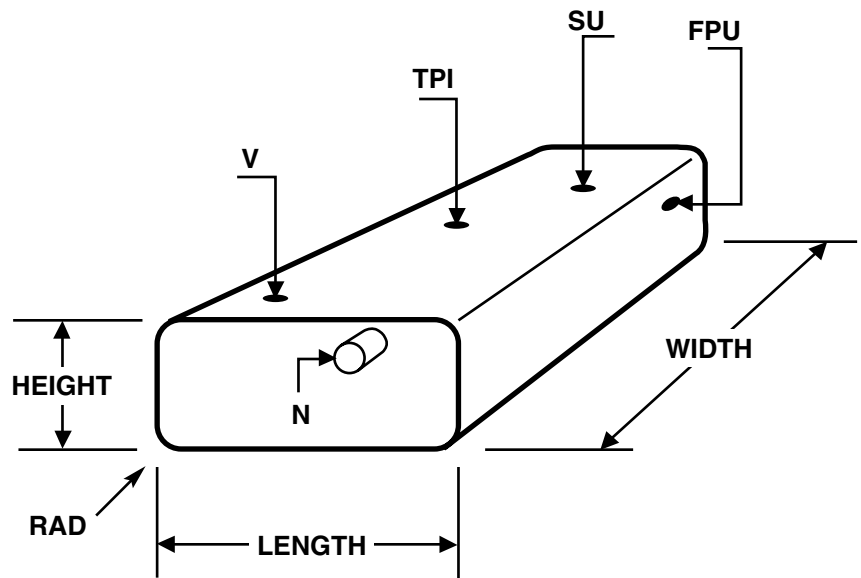
SYMBOLS

F	=	Front of Car
R	=	Rear of Car
LH	=	Drivers Side (Left)
RH	=	Passenger Side (Right)
SU	=	Sending Unit
RAD	=	Radiused Corners
N	=	Neck Location
FPU	=	Fuel Pickup
V	=	Vent Location
TPI	=	Tune Port Pump Locations

SEE PAGE 45
FOR ACCESS DOOR.
MAKES IT EASY
TO SERVICE SENDER
& T.P.I.

Capacity Formula

$H \times W \times L \times .004329 = \text{Gal.}$



(It is best to draw top view, side view and front view.)

TYPE TWO

- Draw a sketch of the tank you might want.
- Make a cardboard or poster board mock-up of the tank, masking tape or duct tape work well. A paper towel roll works well to locate the neck in most cases.
- Fit the mock-up tank to the car, consider clearance for - fittings - sending unit - vent - floor braces - neck - exhaust, or any other projection that might interfere.
- The tank can be mounted by straps or brackets.
- Choices of necks are located on page 20-21.
- Specify the brand of gauges you intend to use.
- If you are going to polish your tank you may want 14 gauge to insure against warpage.
- Be sure to include your phone or fax number so we can contact you.
- Price: We will give you a firm quote before work is started.