



ROCK VALLEY



ANTIQUÉ AUTO PARTS, INC.

GENERAL FUEL TANK INFORMATION

119-1052-SR



119-1060-SR



119-1095-SR



Rock Valley manufactured stainless steel gas tanks for 1928 to 1951 Ford, 1940-48 Lincoln, 1939-51 Mercury, 1931-57 Chevrolet., 1953-67 Corvette, 1933-48 Plymouth-Dodge and many more. We also do custom tanks.

NOTE:

All part numbers ending with "SR" are for street rod application.

Our first tank, for the popular 1934 Ford, was judged "Best New Product of the Year" during the "National Street Rod Association's" national meet in 1981.



SPECIFY A "ROCK VALLEY" GAS TANK FOR THE FOLLOWING ADVANTAGES:

- All tanks are baffled
- Spill-proof caps available with some tanks
- Ball check vent furnished with tanks requiring non vented caps
- All tanks are pressure tested
- All tanks are set up for Stewart Warner, Sun, V.D.O., Auto Meter, and Classic sending units
- Special sending unit application – available upon request
- All tanks are supplied with stainless steel mounting straps, or brackets
- The 1932-1940 Ford tanks are available in a 20 gallon model that is about 3" deeper than a stock tank; the 15 gallon shallow version is about the same depth as original equipment

419-1010-SR



419-1050-SR



419-1020-SR





ROCK VALLEY

ANTIQUUE AUTO PARTS, INC.



HOW TO MAKE A FUEL TANK DECISION

Should I try to save my old tank?

- If you are restoring your vehicle back to stock condition you might consider this idea.
- You can send us your old tank.
- First empty the tank - eliminate all fumes - seal all openings and ship it to us.
- If your straps are in bad shape but good enough to take a pattern from, we can make new s.s. straps at an extra cost.
- Your tank will be cleaned and blasted thoroughly, then repaired.
- It will go through the gas tank Renu-USA Process with guaranteed results. This is a unique chemical bonding repair process that gives your gas tank a tough double layer of protection, inside and out. After the tank is treated it gets baked, providing a permanent fix.
- Is your old tank good enough to renew? We can save tanks that are rusty inside, but not leaking, and we can save tanks that are seeping at the seams, or have some minor holes. If in doubt, call before shipping.



Sample of a tank after "Renu"

REASONS TO BUY A NEW STAINLESS FUEL TANK

- If you are without a tank for your car.
- If you are building a show car.
- If you are needing to change the location of the tank in your car.
- If you are considering a tune port motor in your car.
- If you are considering more capacity.
- If you are looking for a custom application in any car - truck - boat - tractor - etc. We feel we can help you.

WE HAVE PATTERNS FOR MANY TYPES OF VEHICLES AND MANY YEARS. PLEASE CALL FOR INFORMATION.

CALL FOR CURRENT PRICING



ANTIQUE AUTO PARTS, INC.

STAINLESS STEEL GAS TANKS FOR FORD



119-1052-SR

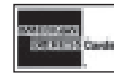
Tank capacity is approximate = L x W x H x .004329

Part No.	Year	Description
119-1020-SR	1928-34	Coupe and Roadsters (located inside the car) stands up behind seat. Fill through trunk or rumble lid 17.0 Gal.
119-1020-SR-TB		Throttle Body Pump Assembly Installed
119-1020-SR-TPI		T.P.I. Pump Assembly Installed
119-1030-SR	1928-31	2-Door Sedan Tank (Located inside the car) behind rear seat. Includes custom brackets, package tray, and fills at left side of car through body. 18.5 Gal. Price per kit
119-1030-SR-TB		Throttle Body Pump Assembly Installed
119-1030-SR-TPI		T.P.I. Pump Assembly Installed
119-1045-SR	1928-31	Pickup Tank (Located under pickup box, has roll pan look) Fills through floor of box, (Includes recessed cup)
119-1045-SR-TB		Throttle Body Pump Assembly Installed
119-1045-SR-TPI		T.P.I. Pump Assembly Installed
119-1050-SR	1932	Passenger - Stamped-Indent 15 Gal.
119-1050-SR-TB		Throttle Body Pump Assembly Installed
119-1050-SR-TPI		T.P.I. Pump Assembly Installed
119-1055-SR	1932	Passenger - Stamped-Indent 20 Gal.
119-1055-SR-TB		Throttle Body Pump Assembly Installed
119-1055-SR-TPI		T.P.I. Pump Assembly Installed
119-1052-SR	1932	Hi-Boy - Includes fiberglass cover 15 Gal.
119-1052-SR-TB		Throttle Body Pump Assembly Installed
119-1052-SR-TPI		T.P.I. Pump Assembly Installed
119-1057-SR	1932	Hi-Boy - Includes fiberglass cover 20 Gal.
119-1057-SR-TB		Throttle Body Pump Assembly Installed
119-1057-SR-TPI		T.P.I. Pump Assembly Installed

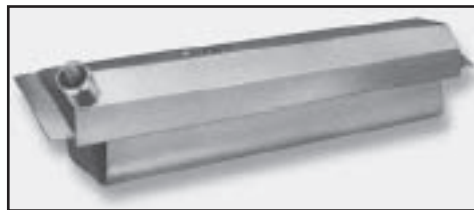
CALL FOR CURRENT PRICING



ROCK VALLEY



ANTIQUE AUTO PARTS, INC.



1933-37 Ford "Shock Option" for
Stock Vehicle - Inc.: Notching/
Neck (In Some Cases) /6-Hole

119-1060-SR

Continued

STAINLESS STEEL GAS TANKS FOR FORD

Part No.	Year	Description
119-1060-SR	1933-34	Passenger cars "Except 1934 Victoria" - 15 Gal.
119-1060-SR-TB		Throttle Body Pump Assembly Installed
119-1060-SR-TPI		T.P.I. Pump Assemble Installed
119-1065-SR	1933-34	Passenger cars "Except 1934 Victoria" - 20 Gal.
119-1065-SR-TB		Throttle Body Pump Assembly Installed
119-1065-SR-TPI		T.P.I. Pump Assembly Installed
*119-1062-SR	1933-34	Coupe-Roadster-Cabr. Trunk Fill - 15 Gal. *(See Note Below)
119-1062-SR-TB		Throttle Body Pump Assembly Installed
119-1062-SR-TPI		T.P.I. Pump Assembly Installed
*119-1067-SR	1933-34	Coupe-Roadster-Cabr. Trunk Fill - 20 Gal. *(See Note Below)
119-1067-SR-TB		Throttle Body Pump Assembly Installed
119-1067-SR-TPI		T.P.I. Pump Assembly Installed
119-1080-SR	1934-37	Pickup & 1934 Sed. Div & Victoria - 15 Gal.
119-1080-SR-TB		Throttle Body Pump Assembly Installed
119-1080-SR-TPI		T.P.I. Pump Assembly Installed
119-1085-SR	1934-37	Pickup & 1934 Sed. Div & Victoria - 20 Gal.
119-1085-SR-TB		Throttle Body Pump Assembly Installed
119-1085-SR-TPI		T.P.I. Pump Assembly Installed
119-1090-SR	1935-36	Passenger Car & Sed. Div - 15 Gal.
119-1090-SR-TB		Throttle Body Pump Assembly Installed
119-1090-SR-TPI		T.P.I. Pump Assembly Installed
119-1095-SR	1935-36	Passenger Car & Sed. Div - 20 Gal.
119-1095-SR-TB		Throttle Body Pump Assembly Installed
119-1095-SR-TPI		T.P.I. Pump Assembly Installed

*NOTE: Tank has a screw in removable neck that fills inside the trunk. The neck is located on the drivers side, far to the rear.

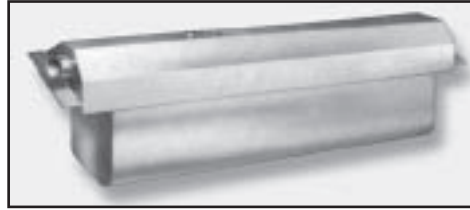
‡NOTE: 1933-37 Ford "Shock Option" any or all of these options are available. Notching for Stock Shocks, 6-Hole Sending Unit Hole and Neck for Stock Gas Cap. \$50.00

CALL FOR CURRENT PRICING

5800 NORTH ROTHWELL RD. • BOX 352 • STILLMAN VALLEY, IL 61084 • 1-815-645-2271 • 1-800-344-1934 • FAX: 1-815-645-2740



ANTIQUE AUTO PARTS, INC.



1933-37 Ford "Shock Option"
Inc.: Shock Notch
Stock Style Neck (In Some Cases)
6-Hole Sender

119-1095-SR

Continued

STAINLESS STEEL GAS TANKS FOR FORD

Part No.	Year	
119-1105-SR	1937	Passenger Car & Woodie Wgn-15 Gal. (Ask About Floor Configuration)
119-1105-SR-TB		Throttle Body Pump Assembly Installed
119-1105-SR-TPI		T.P.I. Pump Assembly Installed
119-1110-SR	1937	Passenger Car & Woodie Wgn - 20 Gal.
119-1110-SR-TB		Throttle Body Pump Assembly Installed
119-1110-SR-TPI		T.P.I. Pump Assembly Installed
		*Ask About Floor Configuration
119-1117-SR	1938-40	Woodie Passenger Car & 40-41 Pickup - 15 Gal.
119-1117-SR-TB		Throttle Body Pump Assembly Installed
119-1117-SR-TPI		T.P.I. Pump Assembly Installed
119-1120-SR	1938-40	Woodie Passenger Car & 40-41 Pickup - 20 Gal.
119-1120-SR-TB		Throttle Body Pump Assembly Installed
119-1120-SR-TPI		T.P.I. Pump Assembly Installed
119-1129-SR	1941-48	Passenger Car & Station Wagon - 16 Gal.
119-1129-SR-TB		Throttle Body Pump Assembly Installed
119-1129-SR-TPI		T.P.I. Pump Assembly Installed
119-1130-SR	1941-48	Passenger Car & Station Wagon - 20 Gal.
119-1130-SR-TB		Throttle Body Pump Assembly Installed
119-1130-SR-TPI		T.P.I. Pump Assembly Installed
119-1134-SR	1948-52	Pickup - Under Bed. - 18 Gal.
119-1134-SR-TB		Throttle Body Pump Assembly Installed
119-1134-SR-TPI		T.P.I. Pump Assembly Installed
219-1136-SR	1949-51	Passenger Car - Stock Capacity - 20 Gal.
219-1136-SR-TB		Throttle Body Pump Assembly Installed
219-1136-SR-TPI		T.P.I. Pump Assembly Installed
219-1137-SR	1949-51	Ford Station Wagon
219-1137-SR-TB		Throttle Body Pump Assembly Installed
219-1137-SR-TPI		T.P.I. Pump Assembly Installed

CALL FOR CURRENT PRICING



ROCK VALLEY

ANTIQUE AUTO PARTS, INC.



Continued STAINLESS STEEL GAS TANKS FOR FORD

Part No.	Year	
219-1158-SR	1952-54	*Passenger Car - Stock Capacity - 17 Gal.
219-1158-SR-TB		Throttle Body Pump Assembly Installed
219-1158-SR-TPI		T.P.I. Pump Assembly Installed. *Requires Fuel Cap Number 419-2416
219-1190-T	1953-55	Pickup - Stock Capacity - 18 Gal.
219-1190-T-TB		Throttle Body Pump Assembly Installed
219-1190-T-TPI		T.P.I. Pump Assembly Installed
219-1180-SR	1955	Passenger Car - Stock Capacity - 17 Gal.
219-1180-SR-TB		Throttle Body Pump Assembly Installed
219-1180-SR-TPI		T.P.I. Pump Assembly Installed
219-1191-U	1953-56	P.U. 1/2 Ton - Underbed, Behind Rear Axle Location
219-1191-U-TB		Throttle Body Pump Assembly Installed
219-1191-U-TPI		T.P.I. Pump Assembly Installed
219-1180-T	1955-56	Thunderbird - Stock Capacity - 20 Gal.
219-1180-T-TB		Throttle Body Pump Assembly Installed
219-1180-T-TPI		T.P.I. Pump Assembly Installed
219-1181-SR	1956	Passenger Car - Stock Capacity - 17 Gal.
219-1181-SR-TB		Throttle Body Pump Assembly Installed
219-1181-SR-TPI		T.P.I. Pump Assembly Installed
219-1182-T	1957	Thunderbird - Stock Capacity - 20 Gal.
219-1182-T-TB		Throttle Body Pump Assembly Installed
219-1182-T-TPI		T.P.I. Pump Assembly Installed

NEW 1963-1964 Galaxie Now Available

STAMPED STEEL GAS TANKS FOR 1932-48 FORD

These are Die Stamped Steel Tanks built to original specifications. For original cars and street rods. They will accept 5-Hole and 6-Hole Sending Units.

Part No.	Year	
B-9002	1932	Passenger - Stock Capacity - Accepts only 5-Hole Sender

CALL FOR CURRENT PRICING



ANTIQUE AUTO PARTS, INC.

Continued

STAMPED STEEL GAS TANKS FOR 1932-48 FORD

Part No.	Year	
40-9002	1933-34	Passenger
67-9002	1935-37	Pick-Up - for Cast Neck
68-9002	1935-36	Passenger - For Cast Neck
78-9002	1937	Passenger - (Early) - For Cast Neck
81A-9002	1938-40	Passenger
11A-9002	1941-48	Passenger
99A-9002	1939-40	Mercury Passenger Car

**BECAUSE YOU DIDN'T SEE IT DOES NOT MEAN WE DON'T BUILD IT.
WE HAVE PATTERNS FOR LATER FORD PASSENGER CARS & TRUCKS
CALL US**

STAINLESS STEEL GAS TANKS FOR 1939-51 MERCURY

Part No.	Year	
119-1128-SR	1939-40	Car "Except Station Wagon" - 20 Gal.
119-1128-SR-TB		Throttle Body Pump Assembly Installed.
119-1128-SR-TPI		T.P.I. Pump Assembly Installed.
119-1130-SR	1941-48	Car "Except Station Wagon" - 20 Gal. (Same as 1941-48 Ford)
119-1130-SR-TB		Throttle Body Pump Assembly Installed.
119-1130-SR-TPI		T.P.I. Pump Assembly Installed.
219-1180-M	1949-51	Cars-Stock Capacity, Mounts and Fits as Original - 20 Gal. We will make modifications if desired
219-1180-M-TB		Throttle Body Pump Assembly Installed.
219-1180-M-TPI		T.P.I. Pump Assembly Installed.

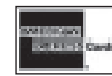
**SOME LATER YEAR MERCURY TANKS ARE AVAILABLE
CALL US**

CALL FOR CURRENT PRICING



ROCK VALLEY

ANTIQUE AUTO PARTS, INC.



STAINLESS STEEL 1940-48 GAS TANKS FOR LINCOLN

Part No.	Year	
119-1180-L	1940-48	Stock Capacity, Mounts and Fits as Original - 22 Gal. We will make modifications if desired.
119-1180-L-TB		Throttle Body Pump Assembly Installed.
119-1180-L-TPI		T.P.I. Pump Assembly Installed.

**SOME LATER YEAR LINCOLN TANKS ARE AVAILABLE
CALL US**

**WE CUSTOM BUILD TANKS FROM DRAWINGS OR SAMPLES.
CALL US FOR INFORMATION AND PRICES. PROMPT DELIVERY.**

Do'in Stainless Steel Tanks For Years!



CALL FOR CURRENT PRICING



ROCK VALLEY



ANTIQUE AUTO PARTS, INC.

STAINLESS STEEL GAS TANKS FOR CHEVROLET



419-1010-SR

Part No.	Year	
419-1010-SR	1931-32	Passenger Car - 20 Gal.
419-1010-SR-TB		Throttle Body Pump Assembly Installed
419-1010-SR-TPI		T.P.I. Pump Assembly Installed
419-1015-SR	1931-32	Pass. Car Using Corvette Rear End. Specify Year of Rear End
419-1015-SR-TB		Throttle Body Pump Assembly Installed
419-1015-SR-TPI		T.P.I. Pump Assembly Installed
419-1020-SR	1933	Passenger Car - 18.5 Gal.
419-1020-SR-TB		Throttle Body Pump Assembly Installed
419-1020-SR-TPI		T.P.I. Pump Assembly Installed
419-1025-SR	1934	Standard & 35 STD. 3W Coupe (Steel) - 18.5 Gal.
419-1025-SR-TB		Throttle Body Pump Assembly Installed
419-1025-SR-TPI		T.P.I. Pump Assembly Installed
419-1030-SR	1934	Master - 18.5 Gal.
419-1030-SR-TB		Throttle Body Pump Assembly Installed
419-1030-SR-TPI		T.P.I. Pump Assembly Installed
419-1035-SR	1935	Standard 5W Coupe & Fiberglass Body - 18.5 Gal.
419-1035-SR-TB		Throttle Body Pump Assembly Installed
419-1035-SR-TPI		T.P.I. Pump Assembly Installed
419-1040-SR	1935	Standard Sedan - 18.0 Gal.
419-1040-SR-TB		Throttle Body Pump Assembly Installed
419-1040-SR-TPI		T.P.I. Pump Assembly Installed
419-1042-SR	1936	Pickup - 19.0 Gal.
419-1042-SR-TB		Throttle Body Pump Assembly Installed
419-1042-SR-TPI		T.P.I. Pump Assembly Installed
419-1045-SR	1936	Standard Coupe - 18.0 Gal.
419-1045-SR-TB		Throttle Body Pump Assembly Installed
419-1045-SR-TPI		T.P.I. Pump Assembly Installed

CALL FOR CURRENT PRICING



ROCK VALLEY



ANTIQUE AUTO PARTS, INC.



419-1050-SR

Continued

STAINLESS STEEL GAS TANKS FOR CHEVROLET

Part No.	Year	
419-1048-SR	1936	Standard Sedan 18.0 Gal.
419-1048-SR-TB		Throttle Body Pump Assembly Installed
419-1048-SR-TPI		T.P.I. Pump Assembly Installed
419-1050-SR	1937	Sedan - 18.0 Gal. (Note - See PN: 419-1455 - pg. 12)
419-1050-SR-TB		Throttle Body Pump Assembly Installed
419-1050-SR-TPI		T.P.I. Pump Assembly Installed.
419-1055-SR	1938-39	Sedan - 20.0 Gal. Convert - 5 Pass. Coupe
419-1055-SR-TB		Throttle Body Pump Assembly Installed
419-1055-SR-TPI		T.P.I. Pump Assembly Installed (Fill Thru R. Fender)
419-1060-SR	1937-40	3 Pass. Coupe - Stock Capacity (fills thru 1/4 panel) - 20 Gal.
419-1060-SR-TB		Throttle Body Pump Assembly Installed
419-1060-SR-TPI		T.P.I. Pump Assembly Installed (Mounts Inside Car - Fills Thru 1/4 Panel)
419-1065-SR	1940	Sedan - Convert - 5 Pass. Coupe - 19.0 Gal.
419-1065-SR-TB		Throttle Body Pump Assembly Installed
419-1065-SR-TPI		T.P.I. Pump Assembly Installed (Fills thru R. Fender)
419-1068-SR	1941-48	3 Passenger Coupe and Sedan Div - Stock Capacity - 18.5 Gal.
419-1068-SR-TB		Throttle Body Pump Assembly Installed
419-1068-SR-TPI		T.P.I. Pump Assembly Installed
419-1070-SR	1941-48	5 Passenger Coupe and Convertible - 20.0 Gal.
419-1070-SR-TB		Throttle Body Pump Assembly Installed
419-1070-SR-TPI		T.P.I. Pump Assembly Installed
419-1075-SR	1941-48	Sedan - 16.0 Gal.
419-1075-SR-TB		Throttle Body Pump Assembly Installed
419-1075-SR-TPI		T.P.I. Pump Assembly Installed

CALL FOR CURRENT PRICING



Continued

STAINLESS STEEL GAS TANKS FOR CHEVROLET

Part No.	Year	
419-1077-SR	1941-46	Pickup 1/2-Ton Tank - Stock Capacity & Location - 24.5 Gal.
419-1077-SR-TB		Throttle Body Pump Assembly Installed
419-1077-SR-TPI		T.P.I. Pump Assembly Installed
419-1080-SR	1947-54	(First Series 55) Suburban, 1/2-Ton Panel & 47-48 P.U. Stock Capacity - 13.5 Gal.
419-1080-SR-TB		Throttle Body Pump Assembly Installed
419-1080-SR-TPI		T.P.I. Pump Assembly Installed
419-1082-SR	1947-54	Under Pickup Bed Tank, Located Behind Rear Axle - 20.5 Gal.
	1st Series "55	Spare Tire Mount Must be Eliminated - fits 1/2 ton only.
419-1082-SR-TB		Throttle Body Pump Assembly Installed
419-1082-SR-TPI		T.P.I. Pump Assembly Installed
419-1085-SR	1949-52	Car - Stock Capacity - 16 Gal.
419-1085-SR-TB		Throttle Body Pump Assembly Installed
419-1085-SR-TPI		T.P.I. Pump Assembly Installed
419-1090-SR	1953-54	Passenger Car - Except Station Wagon - 18.5 Gal.
419-1090-SR-TB		Throttle Body Pump Assembly Installed
419-1090-SR-TPI		T.P.I. Pump Assembly Installed
419-1096-SR	1955-59	Under Pickup Bed Tank, Located Behind Rear Axle - 20 Gal.
	2st Series "55-59	Spare Tire Mount Must be Eliminated - fits 1/2 tone only.
419-1096-SR-TB		Throttle Body Pump Assembly Installed
419-1096-SR-TPI		T.P.I. Pump Assembly Installed

ALL TANKS ARE HAND FABRICATED

**PLEASE ALLOW APPROXIMATELY
6 TO 8 WEEKS DELIVERY ON ALL
GAS TANKS**

CALL FOR CURRENT PRICING

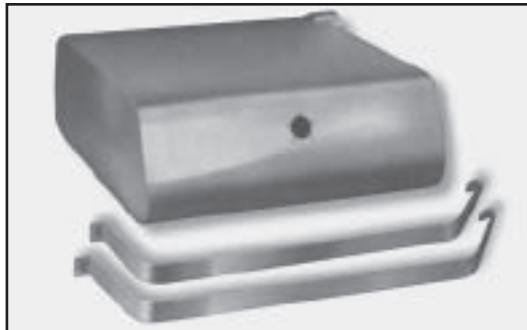


ROCK VALLEY

ANTIQUE AUTO PARTS, INC.



STAINLESS STEEL GAS TANKS FOR CLASSIC 55-57 CHEVROLET



Gas Tank Fits Classic
55-57 Chevrolet

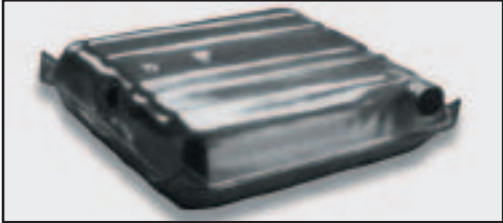
Part No	Year	Description
419-1130	1955-56	Passenger Except Station Wagon - Stock Capacity - 18 Gal. S/S mounting straps furnished. Specify top mount or original sender location.
419-1130-TB		Throttle Body Pump Assembly Installed
419-1130-TPI		T.P.I. Pump Assembly Installed
		*Available in Extra Capacity (Additional Charge)
419-1135	1957	Passenger Except Station Wagon - Stock Capacity - 18 Gal. S/S mounting straps furnished. Specify sender location.
419-1135-TB		Throttle Body Pump Assembly Installed
419-1135-TPI		T.P.I. Pump Assembly Installed
		*Available in Extra Capacity (Additional Charge)
419-1156-SR	1962-67	Nova - Stock Capacity - Except 62-63 Wagon & 9 passenger Must use bolt in sending unit - S/S mounting straps furnished.
419-1156-SR-TB		Throttle Body Pump Assembly Installed
419-1156-SR-TPI		T.P.I. Pump Assembly Installed
419-1170-SR	1967-68	Camaro - Stock Capacity Must use bolt in sending unit - S/S mounting straps furnished.
419-1170-SR-TB		Throttle Body Pump Assembly Installed
419-1170-SR-TPI		T.P.I. Pump Assembly Installed
419-1171-SR	1969	Camaro - Stock Capacity Must use bolt in sending unit - S/S mounting straps furnished.
419-1171-SR-TB		Throttle Body Pump Assembly Installed
419-1171-SR-TPI		T.P.I. Pump Assembly Installed

CALL FOR CURRENT PRICING

ROCK VALLEY



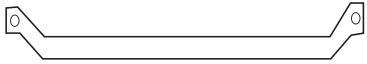
ANTIQUE AUTO PARTS, INC. STAMPED STEEL GAS TANKS FOR CHEVROLET



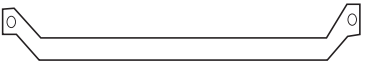
55-56 Chevrolet
Gas Tank

Part No.	Year	
419-1131	1955-56	Passenger Car Except Station Wagon - Stock Capacity - 18 Gal. No mounting straps furnished
419-1131-TB		Throttle Body Pump Assembly Installed
419-1131-TPI		T.P.I. Pump Assembly Installed
419-1132	1955-56	Station Wagon/Nomad - Stock Capacity No mounting straps furnished
419-1132-TB		Throttle Body Pump Assembly Installed
419-1132-TPI		T.P.I. Pump Assembly Installed
419-1136	1957	Passenger Car Except Station Wagon - Stock Capacity - 18 Gal. No mounting straps furnished
419-1136-TB		Throttle Body Pump Assembly Installed
419-1136-TPI		T.P.I. Pump Assembly Installed
419-1137	1957	Station Wagon/Nomad - Stock Capacity No mounting straps furnished
419-1137-TB		Throttle Body Pump Assembly Installed
419-1137-TPI		T.P.I. Pump Assembly Installed
419-1159	1964-67	Chevelle No mounting straps furnished
419-1159-SR-TB		Throttle Body Pump Assembly Installed
419-1159-SR-TPI		T.P.I. Pump Assembly Installed

*** MANY OTHER "MUSCLE CAR" ERA TANKS AVAILABLE
CALL FOR DETAILS & AVAILABILITY (Ford, Chevy, Mopar and More)
NOTE: Mounting Straps Available at Additional Cost**



MOUNTING STRAPS



419-1410	1955-57	Stainless Straps Only
419-1440	1967-69	Stainless Straps Only - Camaro
419-1455	1937	Chevy Upper Straps
419-1465	1955-57	Steel Straps as Original - Sedan
419-1475	1955-57	Steel Straps as Original - Station Wagon - Nomad

Straps Can Also Be Made to Order - Call For Prices

CALL FOR CURRENT PRICING



ROCK VALLEY

ANTIQUE AUTO PARTS, INC.



STAINLESS STEEL GAS TANKS FOR 1953-67 CORVETTE



Part No.	Year	
419-1175-V	1953-55	Stock Capacity
419-1175-V-TB		Throttle Body Pump Assembly Installed
419-1175-V-TPI		T.P.I. Pump Assembly Installed
419-1180-V	1956-62	Stock Capacity
419-1180-V-TB		Throttle Body Pump Assembly Installed
419-1180-V-TPI		T.P.I. Pump Assembly Installed
419-1185-V	1963-67	Stock Capacity
419-1185-V-TB		Throttle Body Pump Assembly Installed
419-1185-V-TPI		T.P.I. Pump Assembly Installed

NOTE: Mounting straps furnished.

STAINLESS STEEL GAS TANKS FOR PLYMOUTH - DODGE

Part No.	Year	
619-1010	1933-34	Short Wheel Base Coupe (Round Tank) - 18.5 Gal.
619-1010-TB		Throttle Body Pump Assembly Installed
619-1010-TPI		T.P.I. Pump Assembly Installed
619-1015	1933-34	Long Wheel Base Coupe (Oval Tank) - 18.5 Gal.
619-1015-TB		Throttle Body Pump Assembly Installed
619-1015-TPI		T.P.I. Pump Assembly Installed
619-1020	1933-34	Short Wheel Base Sedan - 18.5 Gal.
619-1020-TB		Throttle Body Pump Assembly Installed
619-1020-TPI		T.P.I. Pump Assembly Installed
619-1025	1933-34	Long Wheel Base Sedan - 18.5 Gal.
619-1025-TB		Throttle Body Pump Assembly Installed
619-1025-TPI		T.P.I. Pump Assembly Installed

CALL FOR CURRENT PRICING



ANTIQUE AUTO PARTS, INC.

STAINLESS STEEL GAS TANKS FOR PLYMOUTH - DODGE

Part No.	Year	
619-1040	1937-38	Stock Capacity - 21 Gal.
619-1040-TB		Throttle Body Pump Assembly Installed
619-1040-TPI		T.P.I. Pump Assembly Installed
619-1045	1939	Stock Capacity - 20 Gal.
619-1045-TB		Throttle Body Pump Assembly Installed
619-1045-TPI		T.P.I. Pump Assembly Installed
619-1050	1941-48	Stock Capacity - 18.5 Gal.
619-1050-TB		Throttle Body Pump Assembly Installed
619-1050-TPI		T.P.I. Pump Assembly Installed

Plymouth and Dodge Tanks Require 419-2416 Fuel Cap.

OTHER YEARS – CALL

NOTE: If your 1933-34 Plymouth, or Dodge, original gas tank was round, you have a short wheel base car. If your original tank was oval you have a long wheel base car. On the short wheel base coupe we have found two different style necks, therefore the short wheel base coupe tank will come with a two piece neck to insure proper fit. Stainless steel straps are supplied with Plymouth and Dodge tanks.

**WE HAVE MANY PATTERNS TO BUILD TANKS FOR VEHICLES SUCH AS BUICKS - OLDSMOBILES
CADILLACS - CHRYSLERS - NASH - PACKARD - HUDSON - REO - KAISER - FRAZER
AUBURN - COBRA - FIAT - WILLIES - JEEP - ESSEX - DURANT - COAST TO COAST - DOWNS
OLD CHICAGO - MINOTTI - ETC.**

**WE CUSTOM BUILD TANKS FROM DRAWINGS OR SAMPLES.
CALL US FOR INFORMATION, PRICES AND DELIVERY.**



CALL FOR CURRENT PRICING



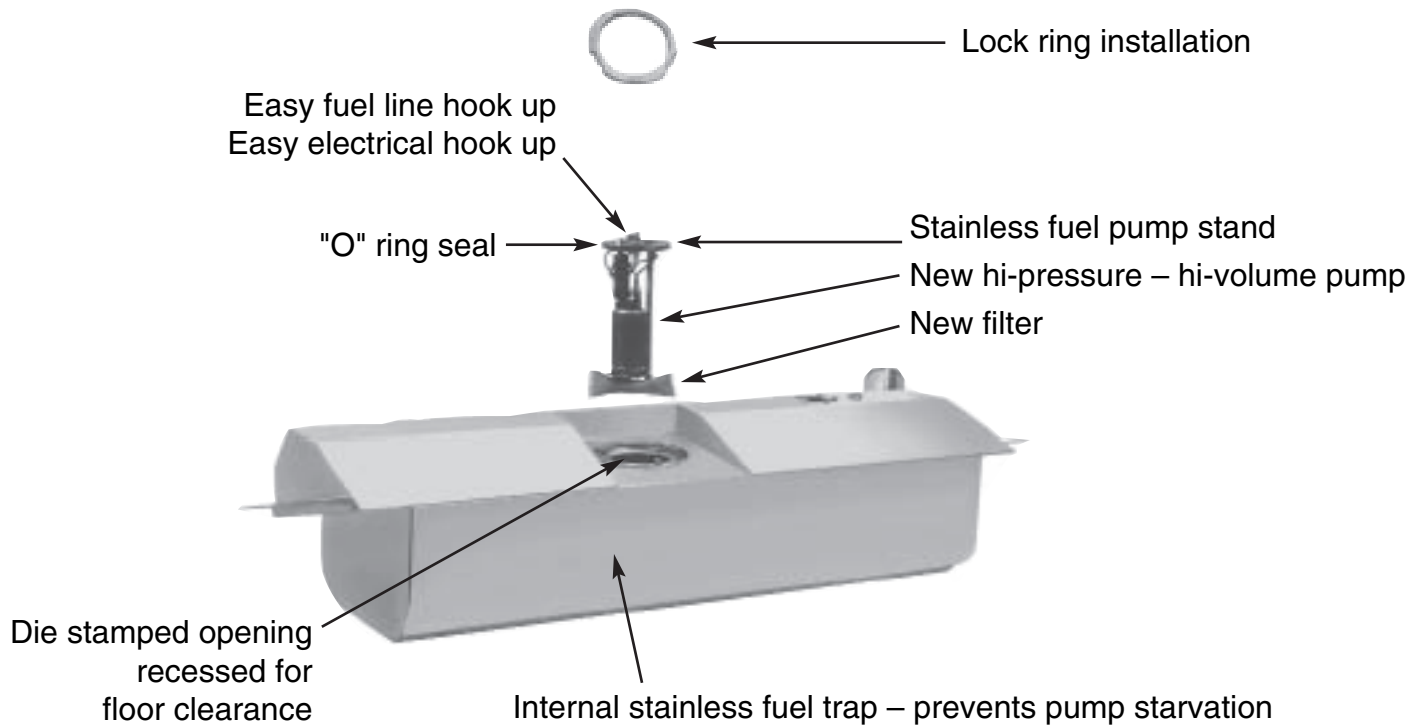
ROCK VALLEY

ANTIQUÉ AUTO PARTS, INC.



TUNE PORT AND THROTTLE BODY INJECTION IN TANK PUMP INFORMATION

May we recommend an access door in your trunk to service your sender and TPI pump.
See page 46



FACTS

Fuel pump starvation can be caused by vapor lock or from the fuel being washed away from the fuel pickup. The pump depends on the fuel for cooling and lubrication. If for any reason fuel is interrupted, even briefly, the engine will stumble or die. This is very hard on the pump. We highly recommend internal tank pumps.

The bitterness of poor quality remains long after the sweetness of low price is forgotten.

CALL FOR CURRENT PRICING



ANTIQUE AUTO PARTS, INC.

TUNE PORT INJECTION IN TANK PUMP INFORMATION

The factory has good reasons for submerging their fuel pumps in the tanks of their tune port injected vehicles. This system requires a high pressure-high volume fuel pump and has a return line, so all the unused fuel gets returned to the tank rather than staying in the line. This combination causes everything to happen very quickly — if fuel washes away from the pick up point for even a short time a block of air gets to the motor almost immediately. Not only does this cause the motor to stumble or die, it's also very hard on the pump because it gets its lube from the fuel.

The fix for this is to build a trap around the pump to retain the gas at the pickup point. This is the major reason for submerging the pump — but not the only one. The tank acts as a heat shield from the road and exhaust heat, giving the pump a longer operating life by keeping it cool. It also reduces the chance of vapor locking. These facts, combined with the much neater installation and appearance, make the submerged pump the hands down choice over the external fuel pump application.

Rock Valley submerges their pumps with 100% stainless steel hardware to maintain the highest quality possible.

DEALING WITH YOUR ORIGINAL STEEL TANK

In some cases it is an advantage to use your original factory tank. To decide which is best for your car, call. It can be discussed over the phone. Listed are some of the average costs to convert to in-tank pumps:

- Original used tank Call for current pricing
 - New Steel Reproduction Tanks Call for current pricing
 - New Aluminum Tank Call for current pricing
 - Sump Added to tanks Call for current pricing
- (Required on tanks less than 8" deep)

THE TUNE PORT INJECTED MOTOR FOR STREET RODS — CUSTOMS —
HI-PERFORMANCE TRUCKS AND STREET MACHINES, IS THE WAY OF THE FUTURE.
FOR TECHNICAL SUPPORT IN T.P.I. ENGINE INSTALLATION, MAY WE RECOMMEND:

Street & Performance



ALUMINUM-RACING & STREET SPECIALTIES

P.O. BOX 1169
MENA, ARKANSAS
501-394-5711

**WE CUSTOM BUILD TANKS FROM DRAWINGS OR SAMPLES.
CALL US FOR INFORMATION, PRICES AND DELIVERY.**

ROCK VALLEY



ANTIQUE AUTO PARTS, INC. TUNED PORT INJECTION KITS

119-1510-SR



AVAILABLE IN NEW TANKS OR AS A KIT TO INSTALL IN YOUR PRESENT TANK. INSIDE DEPTH MUST BE 7" OR MORE.



COMPLETELY ASSEMBLED, WIRED AND READY TO INSTALL. ROCK VALLEY'S T.P.I. OPTION

FEATURES:

- Die stamped opening
- Stainless fuel pump stand
- Lock ring installation — with 'O' ring
- Easy fuel line hook up
- Easy electrical hook up
- New hi-pressure — hi-volume pump
- New filter
- Stainless fuel trap — prevents pump starvation

Part No.

119-1510-SR	T.P.I. Kit (specify depth of tank)	\$295.00
119-1511-SR	T.P.I. Kit with 1999 and Newer LS-1 Fuel Pump	\$345.00
119-1515-SR	T.P.I. Kit with Holley Ultra Hi Pressure Fuel Pump.....	\$395.00
119-1520-SR	Throttle Body Injection Pump Kit	\$295.00

PRICE FOR T.P.I. OPTION ONLY. DOES NOT INCLUDE COST OF THE TANK.

**WE CUSTOM BUILD TANKS FROM DRAWINGS OR SAMPLES.
CALL US FOR INFORMATION, PRICES AND DELIVERY.**



ANTIQUÉ AUTO PARTS, INC.

HOW TO ORDER AND DESIGN YOUR CUSTOM STAINLESS STEEL TANK

Custom tanks can be broken down into two types.

TYPE ONE would be to reproduce your original tank.

TYPE TWO would be a one of a kind, specially made for your car.

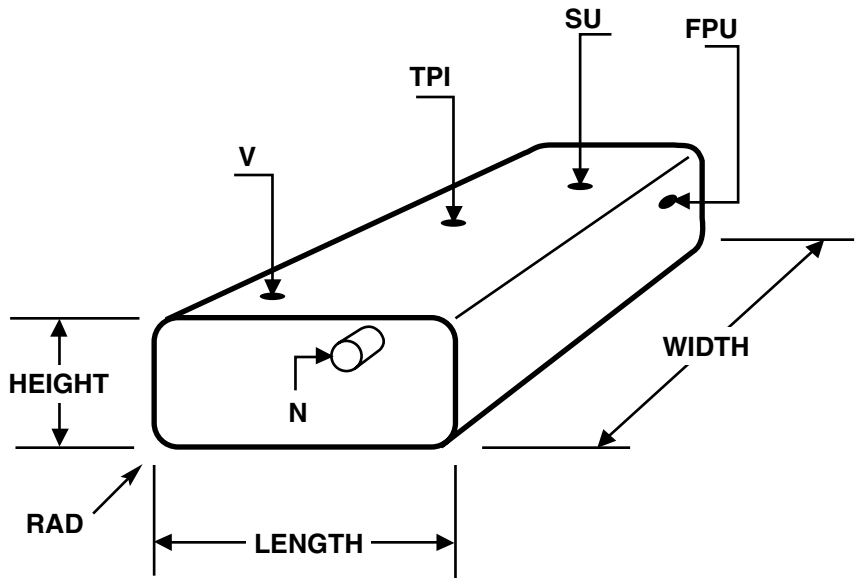
TYPE ONE

Call us and see if we might already have a sample tank for the car you want to do, if not, you can send your tank and a strap. We will fabricate a tank and new straps to fit in the stock location even if you might want to make changes in the - width - depth (for more capacity), - sending unit, or - Internal pump for T.P.I.

SYMBOLS	
F	= Front of Car
R	= Rear of Car
LH	= Drivers Side (Left)
RH	= Passenger Side (Right)
SU	= Sending Unit
RAD	= Radiused Corners
N	= Neck Location
FPU	= Fuel Pickup
V	= Vent Location
TPI	= Tune Port Pump Locations

SEE PAGE 45 FOR ACCESS DOOR. MAKES IT EASY TO SERVICE SENDER & T.P.I.

Capacity Formula
 $H \times W \times L \times .004329 = \text{Gal.}$



(It is best to draw top view, side view and front view.)

TYPE TWO

- Draw a sketch of the tank you might want.
- Make a cardboard or poster board mock-up of the tank, masking tape or duct tape work well. A paper towel roll works well to locate the neck in most cases.
- Fit the mock-up tank to the car, consider clearance for - fittings - sending unit - vent - floor braces - neck - exhaust, or any other projection that might interfere.
- The tank can be mounted by straps or brackets.
- Choices of necks are located on page 20-21.
- Specify the brand of gauges you intend to use.
- If you are going to polish your tank you may want 14 gauge to insure against warpage.
- Be sure to include your phone or fax number so we can contact you.
- Price: We will give you a firm quote before work is started.